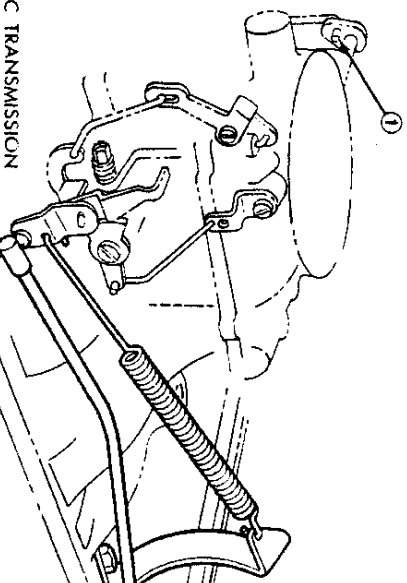


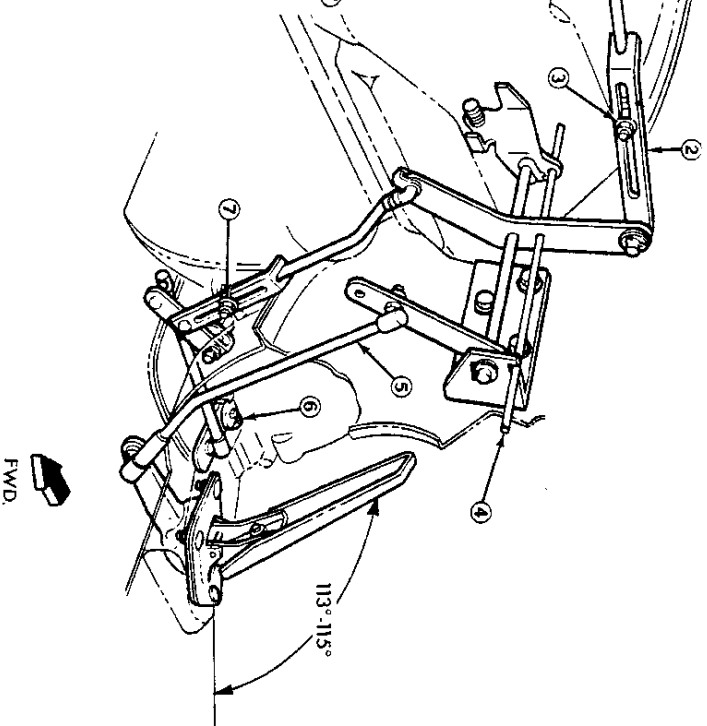
WITH MANUAL TRANSMISSION

1. ASSEMBLE THROTTLE LINKAGE IN PLACE.
2. DISCONNECT CHOKE ① AT CARBURETOR OR BLOCK CHOKE IN FULL OPEN POSITION. OPEN THROTTLE SLIGHTLY TO RELEASE FAST IDLE CAM, THEN RETURN THROTTLE TO CURB IDLE.
3. WITH THE LOCK NUT ③ LOOSE IN THE CARBURETOR ROD, INSERT A 3/16" DIA. ROD ④ APPROXIMATELY 10" LONG THROUGH THE HOLES IN THE BELLCRANK BRACKET AND LEVER ASSY.
4. TIGHTEN CARBURETOR ROD LOCK NUT ③.
5. DISCONNECT ONE END OF THE ACCELERATOR PEDAL ROD ⑤. ADJUST ITS LENGTH TO PROVIDE A PEDAL ANGLE OF 113° TO 115°. REINSTALL THE ROD.
6. REMOVE THE 3/16" DIA. ROD ④ FROM THE BELLCRANK BRACKET AND LEVER ASSY.
7. CONNECT CHOKE ROD ① OR REMOVE BLOCKING FIXTURE.



WITH AUTOMATIC TRANSMISSION

1. ASSEMBLE THROTTLE LINKAGE IN PLACE.
2. DISCONNECT CHOKE ① AT CARBURETOR OR BLOCK CHOKE IN FULL OPEN POSITION. OPEN THROTTLE SLIGHTLY TO RELEASE FAST IDLE CAM, THEN RETURN THROTTLE TO CURB IDLE.
3. WITH THE LOCK NUTS LOOSE ON THE CARBURETOR ③ AND TRANSMISSION ⑦ RODS, INSERT A 3/16" DIA. ROD ④ APPROXIMATELY 10" LONG THROUGH THE HOLES IN THE BELLCRANK BRACKET AND LEVER ASSEMBLY.
4. MOVE THE TRANSMISSION LEVER ⑥ FORWARD AGAINST THE STOP AND TIGHTEN TRANSMISSION ROD LOCK NUT ⑦.
5. DISCONNECT ONE END OF THE ACCELERATOR PEDAL ROD ⑤. ADJUST ITS LENGTH TO PROVIDE A PEDAL ANGLE OF 113° TO 115°. REINSTALL THE ROD.
6. REMOVE THE 3/16" DIA. ROD ④ FROM BELLCRANK BRACKET AND LEVER ASSY.
7. MOVE LINK ② OF CARBURETOR ROD ASSY. REARWARD UNTIL THE TRANSMISSION LEVER STOP IS CONTACTED. TIGHTEN CARBURETOR ROD LOCK NUT ③.
8. CONNECT CHOKE ROD ① OR REMOVE BLOCKING FIXTURE.



62x147

Fig. 17—Throttle Linkage Adjustment (Chrysler)