

MY 1962 CHRYSLER 300 "Sport"

This is NOT a real letter car. For 1962 Chrysler came out with this "Sport" model that could be ordered with all options available on the "Real" 300"H".

So I decided to put all of the options on it that you could order from the factory which made the engine rated at 405 HP.

ALL OF THE FOLLOWING PHOTOS ARE SHOWN AT 30% SIZE. THEY CAN BE SAVED TO A FILE THEN TO ENLARGE JUST POSITION THE CURSOR OVER PHOTO AND RIGHT CLICK, THEN GO DOWN MENU TO (SIZE AND POSITION) THEN CHANGE 29 OR 30% TO WHATEVER SIZE YOU WANT TO VIEW CLOSER DETAILS.



TAKING ENGINE OUT FOR REBUILD AT START OF RESTORATION LAST MARCH, IN 2011 – NOTE 20 YEAR OLD PAINT DIDN'T ACTUALLY LOOK THAT BAD.



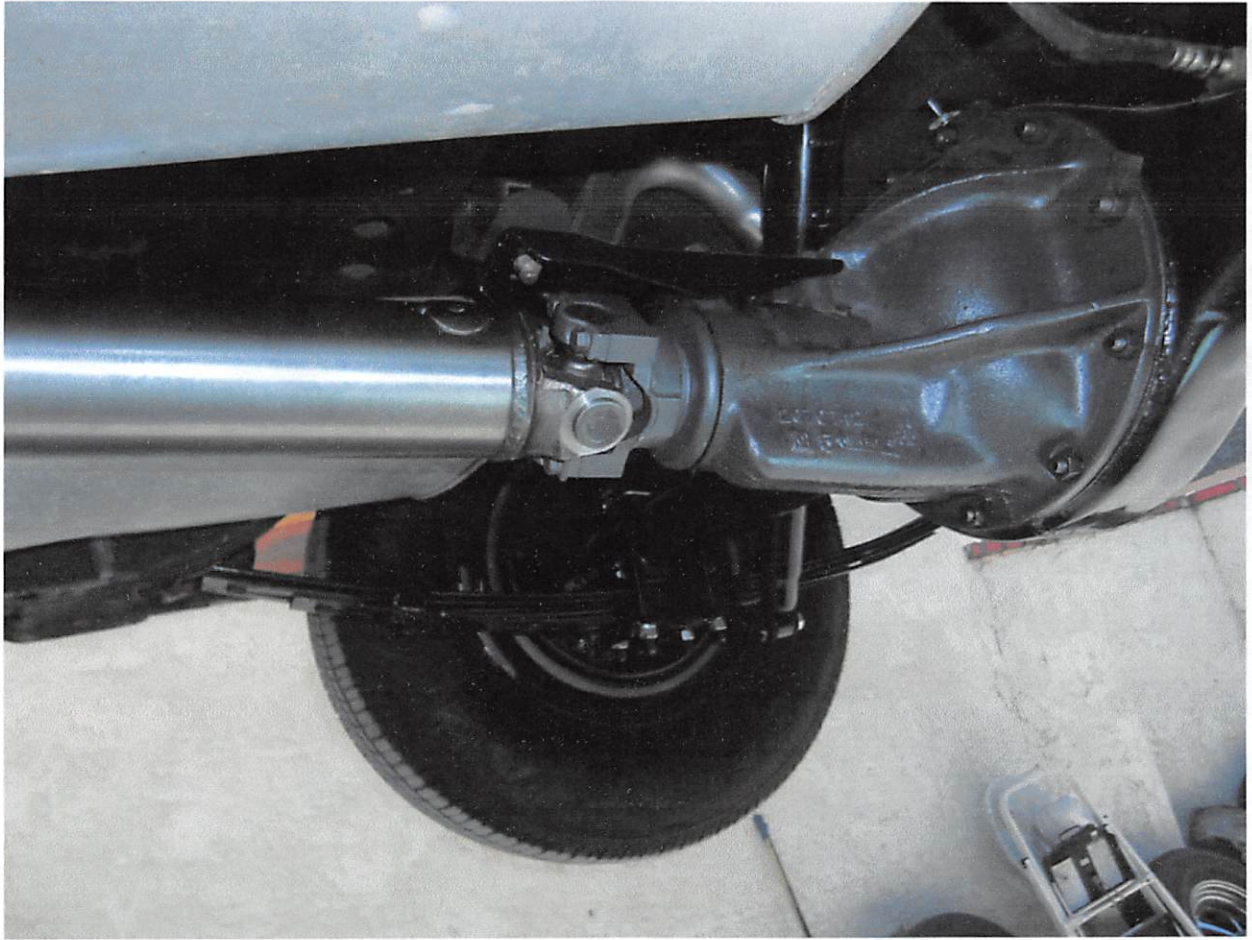
NOTE PAINT AFTER PROFESSIONAL COLOR SAND AND POLISH – ALSO NEW CHROME ON BUMPERS. FINALLY READY TO TAKE HOME TODAY.



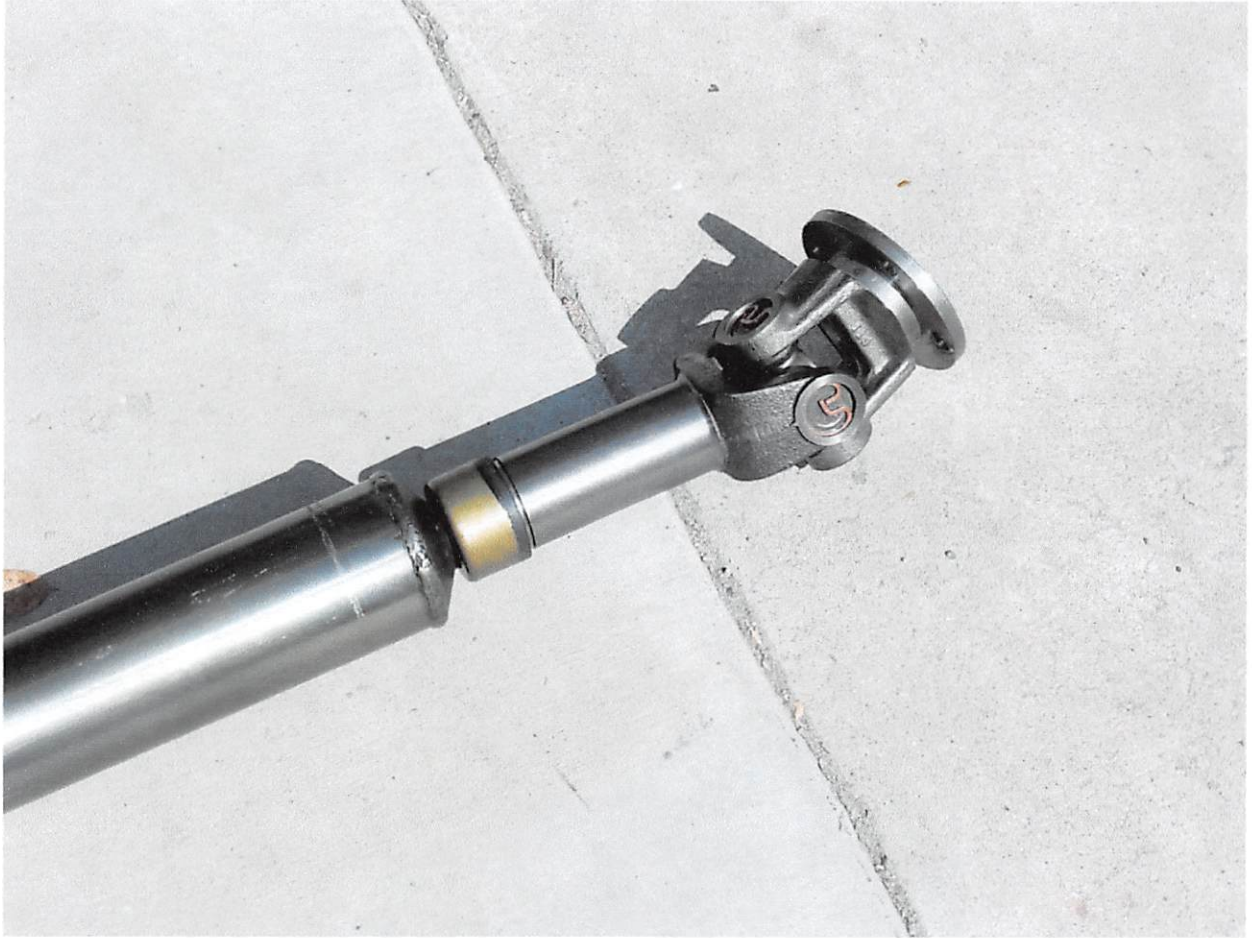
AFTER PAINLESS DENT REMOVAL ON FENDERS



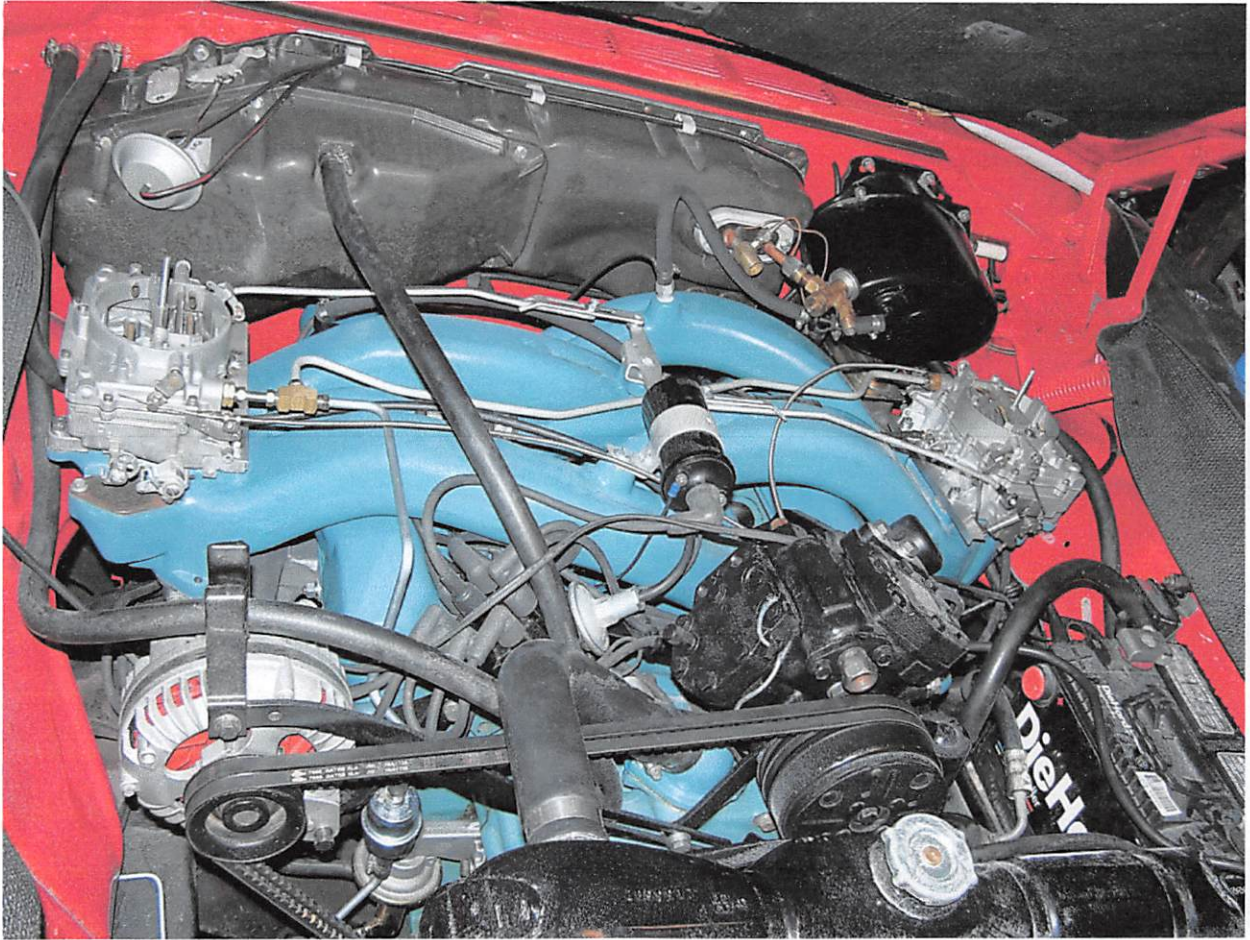
NEW 2 ½ INCH EXHAUST AND REMOVE AND POWDERCOAT COMPLETE REAR END AND BACKING PLATES. REBUILT WITH ALL NEW PARTS FROM DRUM TO DRUM.



COMPLETE REBUILD OF POSI THIRD MEMBER



NEW AND IMPROVED DRIVESHAFT WITH TRUCK SPICER TYPE U-JOINT (GOT RID OF OLD CHRYSLER PIN AND TRUNION WITH RUBBER BOOT THAT ALWAYS FAILS)

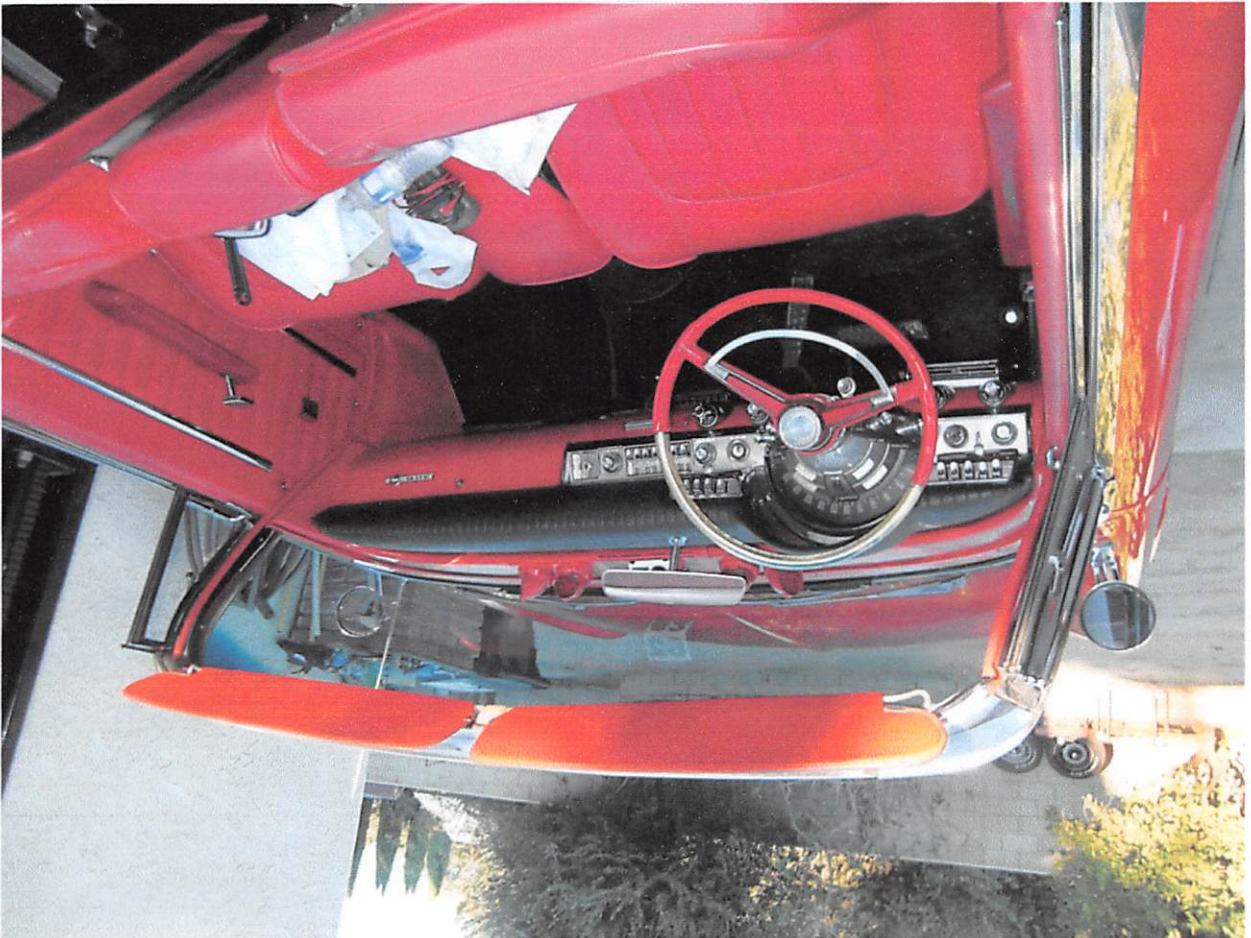


CAR CAME WITH 413 CU INCH ENGINE BUT ONLY HAD A SINGLE FOUR BARREL CARB. FOUND COMPLETE '64 CHRYSLER 300 "J" STYLE SHORT RAM INTAKE AND EXHAUST SETUP. CAR CAME WITH A/C AND AUTOPILOT OPTIONS . A/C WAS UNUSUAL OPTION ON CONVERTIBLE.



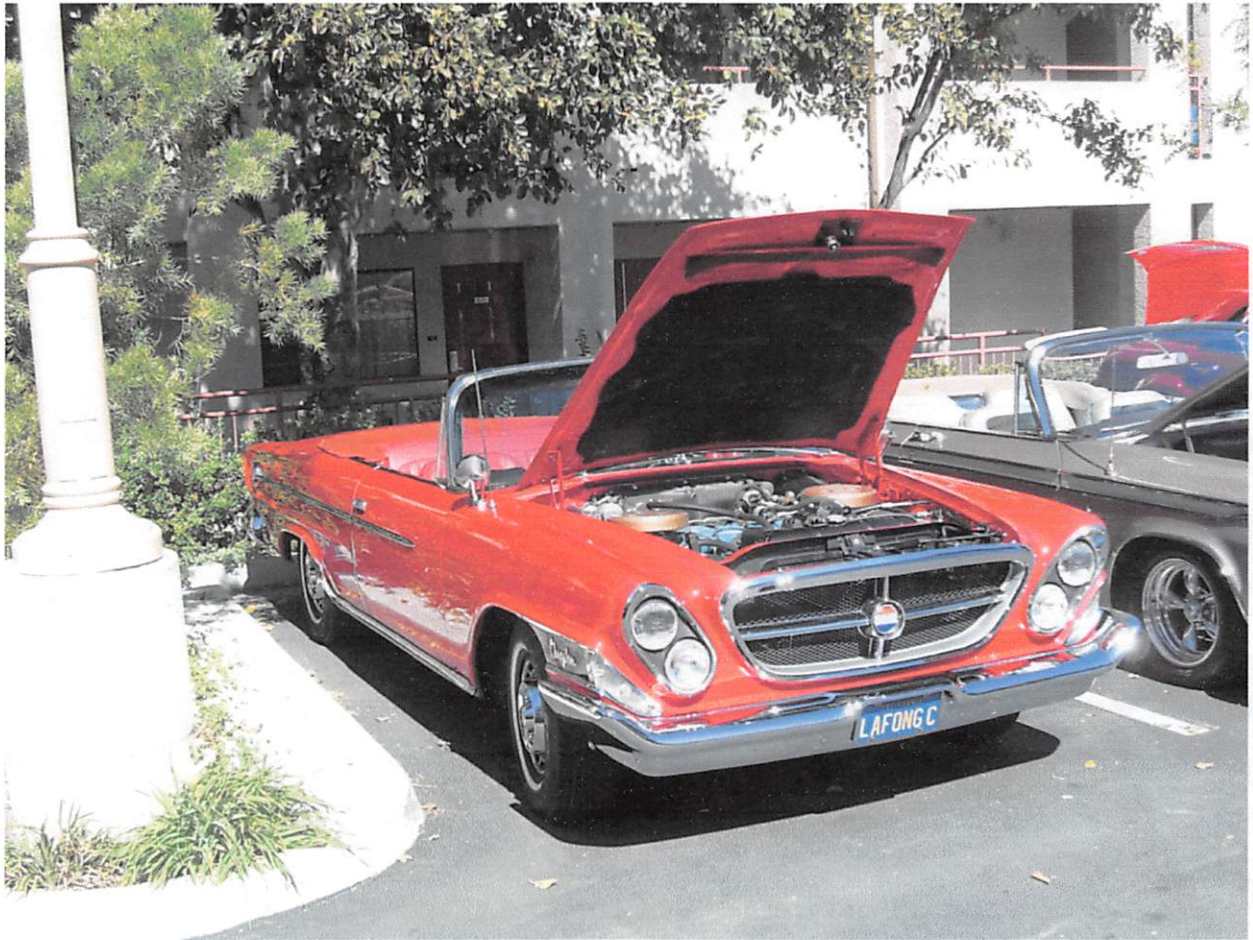
I JUST LOVE THESE STOCK CAST IRON HEADERS THAT TURN INTO DUMP TUBES. STOCK ON '64 300 "J". ADDED FRONT DISC BRAKE KIT. TRANSMISSION WAS REBUILT WITH KEVLAR CLUTCH DISCS AND SPECIAL KICKDOWN LEVER LIKE USED ON SUPER STOCK AND ALTERED WHEELBASE DODGES AND PLYMOUTH.

HAD INTERIOR REDONE WITH NEW FOAM PADDING AND RESTITCHED. OLD
FOAM HAD HARDEND AND AFTER DRIVE AROUND THE BLOCK IT WOULD BE LIKE
IT WAS SNOWING ON THE CARPET. IT NEEDS A NEW STEERING WHEEL BUT THEY
WANT \$1600 BUCKS FOR A DECENT REPRO WHEEL.





THIS WAS MY FIRST OUTING TO A 300 CLUB SHOW DOWN IN TEMECULA. OUTER HEADLIGHTS ARE HID (HIGH INTENSITY DISCHARGE) BULBS. NO FILAMENTS, JUST A CONTINUOUS POINT SOURCE ARC.



I CAME IN SECOND PLACE AFTER THE NICE '65 NEXT DOOR WHO TOOK FIRST IN CONVERTIBLE CLASS. (IT WAS MORE STOCK THAN MY "HOT ROD").